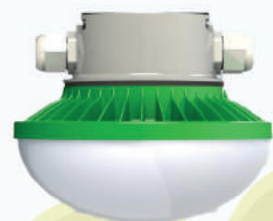




Eco-line LED Tri-proof PMMA

- * 10W or 20W
- * White 4000K or Red/White
- * 145Lm/W
- * 0-10V dimmable
- * IP66
- * no flickering
- * lifetime 60.000hrs

The LED Tri-proof PMMA in White is for Broilers and the Red/White system is for layers, Breeders and rearing systems. The Red light will stop cannibalism.



Eco-line LED Poultry BR6

- * 12W 48V DC
- * 1230Lm
- * 4000K
- * 0-10V dimmable
- * IP67
- * no flickering
- * lifetime 50.000hrs

Easy and flexible installation in small Broiler farmhouses.



Eco-line LED poultry EGG

- * 60W
- * 8100Lm (135Lm/W)
- * 4000K
- * 0-10V dimmable
- * IP66
- * no flickering
- * lifetime 60.000hrs

The LED poultry EGG is specially designed for broiler farmhouses. Up to 26mtr with one row of lights.



Eco-line LED poultry VM7

- * 2,8W 48V DC
- * 250Lm
- * 4000K
- * 0-10V dimmable
- * IP67
- * no flickering
- * lifetime 50.000hrs

The LED poultry VM7 is specially designed for layers farmhouses under the aviary system. The freedom in distance and quantity of installed lights is unique.

WWW.ECOLINE3.NL
WWW.ECOLINE3.NL/DE WWW.ECOLINE3.NL/EN

Zuid Carolinaweg 28
 5453 JH Langenboom (NL)
 post@ecoline3.nl
 +31 486 432136



Eco-line Agricultural Lighting

the best light for humans and animals
das beste Licht für Mensch und Tier
het beste licht voor mens en dier





Eco-line LED PIG T12 tube

- * 30W 150cm
- * 110Lm/W
- * 4000K, 6000K
- * IP67
- * 270° light angle
- * lifetime 50.000hrs

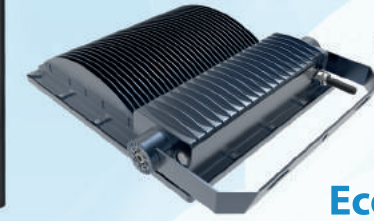
Eco-line LED PIG T12 tubes are supplied with 0,5mtr cable.



Eco-line LED HB

- * 60W, 100W, 150W, 200W, 240W
- * 130Lm/W
- * 4000K
- * 1-10V dimmable
- * IP65
- * Nichia Chip, meanwell Driver
- * lifetime 60.000hrs

Eco-line LED HB is designed for all buildings with a height of 5mtr or above.



Eco-line LED Floodlight

- * 100W, 150W, 200W
- * 140Lm/W
- * 4000K
- * IP65
- * -40 / +50°C
- * Nichia Chip, meanwell Driver
- * lifetime 60.000hrs

Eco-line Floodlight is designed for outdoor lighting on farms and at outdoor horse riding pitches.

Eco-line Lighting gives a 5 year warranty against manufacturing and material defects on all LED Lights



Eco-line LED Tri-proof MP

- * 15/30W, 35/50W, 55/70W
- * 130Lm/W
- * IP66 and IP69K
- * linkable
- * lifetime 60.000hrs

Eco-line LED Tri-proof MP lights are adjustable in power. The lights are linkable and widely used in agricultural buildings and farmhouses.



Eco-line LED Tri-proof PMMA

- * 20W, 40W, 60W, 100W
- * 145Lm/W
- * 0-10V dimmable
- * IP66
- * linkable
- * lifetime 60.000hrs

Eco-line LED Tri-proof PMMA is widely used in agricultural buildings and farmhouses.

Vision of animals comparing to humans

